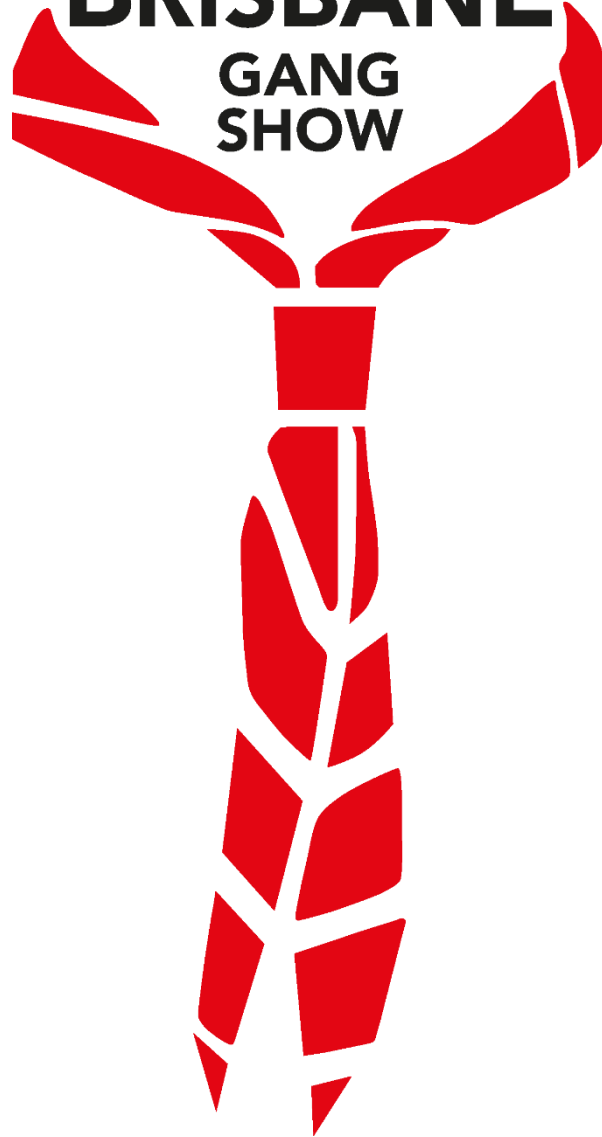


**BRISBANE**


**GANG  
SHOW**



**SUPPORT TEAM  
INFORMATION BOOK**

# Contents Page

Contents Page .....	1
A Message from the Producer .....	2
A Message from the Production Director .....	4
Brisbane Gang Show Code of Conduct .....	4
BGS Goal and Strategies Statement .....	6
Support Team Requirements .....	7
Support Fees .....	7
Support Teams .....	8
BSG Support Teams .....	8
BGS Organisational Chart .....	9
Support Contact List .....	10
The Scarlet Scarf .....	10
Wearing The Brisbane Gang Show Red Scarf .....	11
Support Information .....	11
Service Requirements .....	12
ID Cards .....	12
BGS Events, Functions & Activities .....	12
The BGS Gala .....	12
Red Scarf .....	12
Final Night Dinner .....	13
Tickets .....	13
At The Theatre .....	13
2026 Theatre .....	14
Access Times .....	14
Sign In & Out .....	14
Parking .....	14
Backstage .....	14
Front Of House (Foyer) .....	14
Primrose (Catering/Snacks) .....	15
Smoking .....	15
Emergency, WHS & Authority Levels .....	15



BGS Policies & Support .....	16
Incident And Dispute Management Process.....	16
Other BGS Policies .....	17
Child Safety.....	17
BGS Diary.....	18

# A Message from the Producer

Welcome to the 75th Season of the Brisbane Gang Show. It is truly a privilege to be part of the world's longest continually running Gang Show, and this milestone year promises to be one of the most memorable in our history. This July, we will raise the curtain in a new theatre, under the guidance of a new Director, an exciting new chapter that I eagerly look forward to sharing with you all.

Thank you for giving your valuable time to be part of the Gang. As volunteers, we all know that this role involves far more than “two hours a week,” often requiring sacrifices from our personal and family time. On behalf of our 100+ cast members, thank you for your commitment, energy, and generosity, our show simply would not exist without you.

Brisbane Gang Show is a challenging, sometimes demanding, yet deeply rewarding part of Scouting and Guiding. It is also a uniquely collaborative activity, bringing together Scouts Queensland and Girl Guides Queensland to perform as one team, united under the same scarf and shared purpose. At its heart, Brisbane Gang Show is a training activity. In 2026, you will see an expanded rollout of development opportunities across the Gang, including minimum training standards for team leaders and access to VET qualifications in areas such as creative industries and volunteer management. I strongly encourage all members to take advantage of these opportunities as they arise.

Throughout 2026, we will celebrate 75 years of entertainment with a series of special events, including:

- Trivia Night — Saturday 28 March 2026 (Ticket launch event)
- 75 Year Gala — Saturday 30 May 2026
- High Tea with the Producers — Date to be confirmed (likely late August 2026)

I encourage you to be part of these celebrations. Milestones like this are rare, and this anniversary is a chance to honour our past while celebrating the incredible community that continues to bring the Gang to life.

As the Executive and Management Team continues to evolve, we welcome your feedback. If you are unsure about anything, please reach out, our goal is to ensure that every Leader and volunteer feels informed, supported, and equipped to succeed.

Get ready for an exciting, demanding, and history-making year. The 75th Season will challenge us, inspire us, and create memories that will last a lifetime.

Thank you once again for sharing your time, passion, and talents with the Gang.

**Shaun Sandilands**  
**Producer**

# A Message from the Production Director

Hello and Welcome to The Brisbane Gang Show.

Whether this is your very first with the Gang or you are returning as part of our wonderful tradition, we are so excited to have you with us. This year is especially meaningful as we celebrate our 75th consecutive season, an incredible milestone made possible by generations of people just like you who have shared their energy, talent, friendship, and spirit.

Our show is a true celebration of everything Gang Show represents: creativity, teamwork, laughter, music, and the joy of performing together. I am genuinely excited about the opportunities ahead and the amazing memories we are going to create together.

To our new members: Welcome to the Gang Show family. You are now part of something very special, and we can't wait to see you shine.

To our returning members: Thank you for bringing your experience, enthusiasm, and leadership back to the Gang. You help keep the Gang Show spirit strong.

No matter your age or experience, every single person in the Gang has an important role to play in making this 75th year unforgettable. Let's support one another, work hard, have fun, and create a show we can all be proud of.

Here's to an incredible year ahead.

**John Martin**  
**Director**



# Brisbane Gang Show Code of Conduct



This Code of Conduct is a personal and binding commitment. Its purpose is to protect all members of the Brisbane Gang Show. It applies to all members attached to Brisbane Gang Show years and over, regardless of your association (Scouts or Girl Guides), location and role within the Gang. The Code of Conduct always applies, regardless of environment and interactions, using any telecommunications device or other technologies as defined by the Technology Code of Use. Parents, carers, and guardians who actively participate in Scouting activities must also accept and follow this Code.

## I Will:

- Act in accordance with Scouts Australia child safety and wellbeing policies and procedures at all times.
- Act at all times in accordance with the Promise and Law, Code of Ethics and this Code of Conduct, thereby setting a suitable example for all.
- As a member of the Gang always promote the involvement with Brisbane Gang Show in a positive manner and if grievances occur, follow the Brisbane Gang Show procedure and make contact with the Producer.
- Behave respectfully, courteously and ethically towards the Program Team, fellow youth members, support members of the Gang and their families.
- Listen and respond to the views and concerns of children, particularly if they communicate (verbally or non-verbally) that they do not feel safe or well.
- Promote the safety and wellbeing of all members in the Brisbane Gang Show.
- Demonstrate appropriate personal and professional boundaries with a high degree of personal accountability and responsibility.
- Consider and respect the diverse backgrounds and needs of youth members.
- Create an environment that promotes and enables Gang member participation and is welcoming, culturally safe and inclusive for all members and their families.
- Contribute, where appropriate, to Scouts Australia's policies, discussions, learning and reviews about child safety and wellbeing.
- Identify and mitigate risks to children's safety and wellbeing as required by Scouts Australia's risk assessment and management policies, frameworks and processes.
- Respond to any concerns or complaints of child harm or abuse promptly in accordance with Scouts Australia policy and procedure for receiving and responding to complaints.
- Report all suspected or disclosed child harm or abuse as required by relevant State, Territory or Federal Legislation and by Scouts Australia policy and procedure for internal and external reporting.
- Comply with Scouts Australia protocols in communicating with youth members.
- Comply with relevant State, Territory or Federal Legislation and Scouts Australia policies and procedures for record keeping and information sharing.

# BGS Goal and Strategies Statement

## Goal

To provide the opportunity for members of Scouts Queensland and Girl Guides Queensland to participate in an annual performance season of a high-quality, theatre production that demonstrates the values, versatility and commitment of the Scout Program, and is conducted in accordance with the Aim and Principles of Scouting using the Scout Methods.

## Strategies

1. The Show provides opportunities and training for youth and adult members in many of the aspects of the performing arts, such as singing, dancing, and acting, as well as behind the scenes technical teams and theatre operations.
2. Application for on-stage cast membership in the Show is available to registered:
  - Cub Scouts who have attained their 9th birthday by Opening Night, Scouts, Venturer Scouts, Rover Scouts, and young Leaders up until their 26th birthday by Opening Night.
  - Girl Guides who have attained their 15th birthday by Opening Night and young Leaders up until their 26th birthday by Opening Night.Applicants are then selected through an audition process.
3. The Production Team is responsible for the development of the programme content and items for the show, and the casting and rehearsals for cast members.
4. The content and items presented in each show will be contemporary and relevant to today's society whilst remaining true to the original concept developed by Ralph Reader for the London Gang Show in 1932. The overall programme of the show will reflect the ideals of Scouting with:
  - At least one item to include a Scouting context
  - Finale will be performed with all cast in uniform
  - A Touch of Silver on the Scarlet will be played
5. Gang Show team members and others are encouraged to write and provide original material for items, songs and sketches for the show. A Creative Team, usually including former cast members, provides support to the Production Team the development of the show.
6. Technical teams are responsible for all matters required by the Production Team for the show such as Wardrobe, Stage Crew, Make-Up/Wigs, Marketing, Front-of-house, Ticket Sales, Administration, etc.
7. The show is a production of, and sponsored by Scouts Queensland, as a self-funded activity. As such the show may also actively seek financial sponsorship from the corporate sector.
8. The many resources developed for the show can be shared with other formations of Scouts Queensland for Scout Revues, and broader community shows.
9. The Brisbane Gang Show is represented on the Scouts Queensland Combined Scout Show Committee and the Scouts Australia National Performing Arts Council (NatPAC).

## Support Team Requirements

Applications for volunteer support roles is open to anyone who is available and willing to work towards the success of show and support the Cast and vision of the Production team.

All volunteers are required to be members of Scouts QLD or Girl Guides QLD prior to commencing volunteer activities.

All Scouting supporters aged 18 and above will be required to complete their **mandatory online training** before they can be in attendance at any Brisbane Gang Show activities. Supporters who are members of the Guides Queensland are required to complete CSCF for adults in Guiding. These online modules are part of the process of signing up as a member of Queensland Branch and are to be renewed every 2 years. If you are unsure when you are due to renew your modules, please check with our Operations Director.

All Cast and Volunteers aged 18 and above will be **required to have** a current and valid Blue Card (working with children check) before they can be in attendance at any Brisbane Gang Show activity, whilst youth members are in attendance. If your Blue Card expires between now and showtime, please ensure you renew well in advance to avoid any exclusion time.

As a rule, the lower age limit for people working the Back Stage and Support areas of the show, with the exception of Front of House, will be 15 years as at the opening date of the show, unless otherwise approved the Producer, the Director and the direct Team Leader.

For members aged 15 years and under, opportunities in the FOH team are available when parental/guardian supervision. Youth members under Scout age will be accepted on a case-by-case basis.

## Support Fees

All support team members of Brisbane Gang Show are required to pay a \$25 support fee before your involvement and application can be accepted. Your support fee covers final night dinner, your special 75th Year woggle, Special 75th anniversary badge, show program and other administrative application incidentals.

## Support Teams

There are several support teams at the Brisbane Gang Show - the Production Team, the Backstage Team, the Front-of-House Team and the Executive committee etc. Under each of these teams are further specialty sections. Each Team has a section head or team leader who are responsible for that area of the show and the support team members who are allocated to their team.

Each support team member is allocated to a primary team at Brisbane Gang show

An organisational chart has been prepared to indicate these teams and sections' reporting lines.

There is also a contact list for the teams below.

## BSG Support Teams

**Executive (Organisational Leadership):** Lead the charge, ensuring the show runs smoothly.

**Production Team:** Work directly with our cast, shaping the content and experience of the show.

**Operations:** The organizational superheroes, managing records and all things admin.

**Business:** This team looks after the day to day business operations of Brisbane Gang Show through the whole year, this includes finance, hire, VIP, WH&S etc.

**Backstage / Set Construction:** Build and bring the stage to life, then ensure everything runs seamlessly during performances.

**Creative Team:** Dream big and develop the show's unforgettable creative content.

**Catering "Primrose":** Keep our cast and crew fuelled and happy with delicious meals.

**Front of House:** This team is the first impression that our audience gets when visiting the Brisbane Gang Show. This area includes tickets, ushering, show canteen and merchandise.

**Lighting:** Be the master of the spotlight, illuminating every moment on stage.

**Makeup & Wigs:** Transform our cast into stars that sparkle and shine.

**Band:** Bring the music to life, creating the heartbeat of our show.

**Small Props:** Assemble the magic of the little details that bring scenes to life.

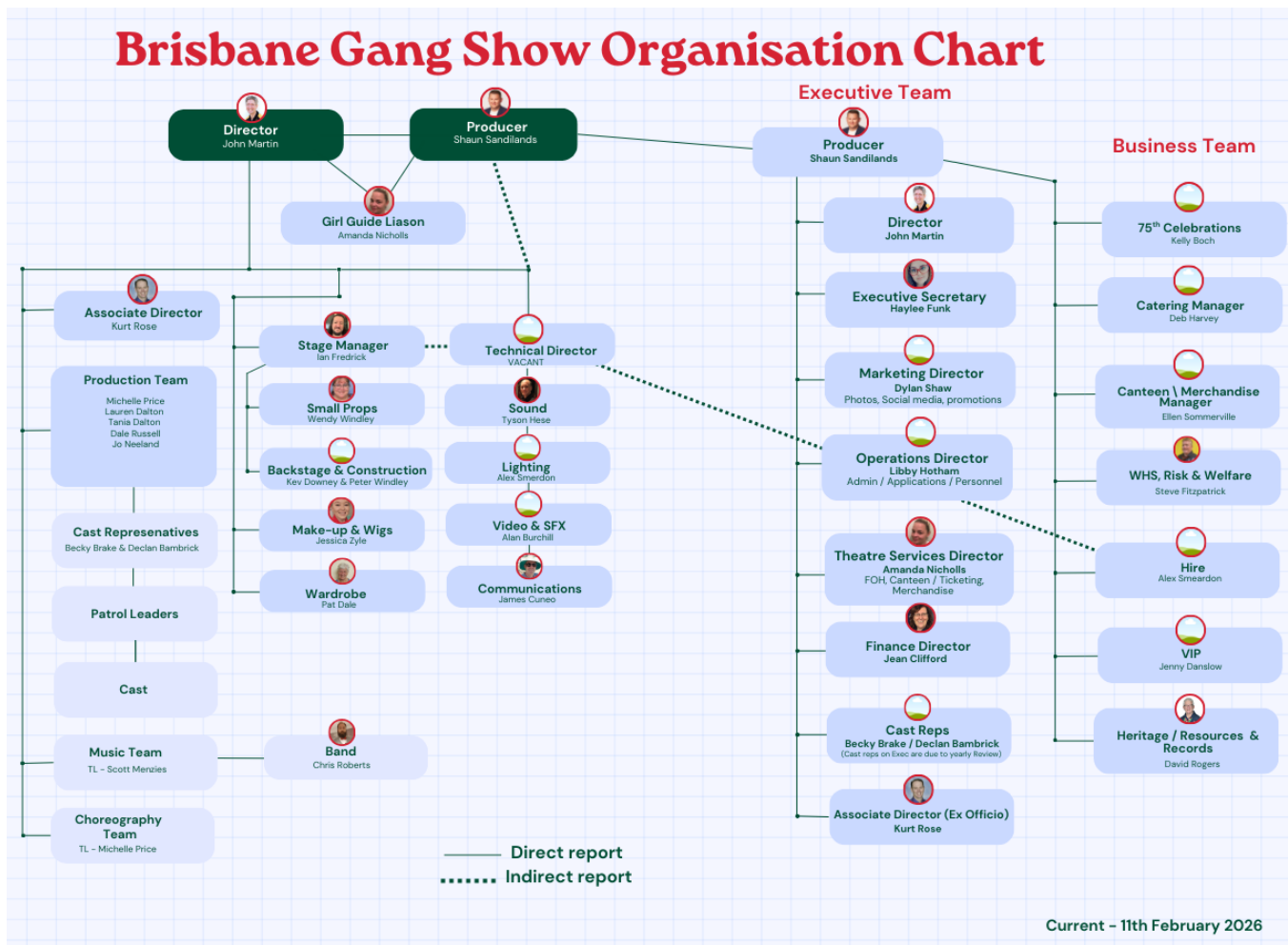
**Sound:** Make sure every note and word is heard loud and clear by our audience.

**Security and Car Parking:** Keep the theatre safe and help patrons navigate with ease.

**Video:** Handle special effects and film the show's unforgettable moments.

**Wardrobe:** Craft stunning costumes to ensure the cast dazzles on stage.

# BGS Organisational Chart



## Support Contact List

<b>Role</b>	<b>Name</b>	<b>Email</b>
Producer	Shaun Sandilands	producer.bgs@scoutsqld.au
Director	John Martin	director.bgs@scoutsqld.au
Executive Secretary	Haylee Funk	secretary.bgs@scoutsqld.au
Operations Director	Libby Hotham	operations.bgs@scoutsqld.au
Theatre Services Director & Guide LIC	Amanda Nicholls	theare.bgs@scoutsqld.au & amandan@guidesqld.org
Ticket Manager	Vanessa Cull	tickets.bgs@scoutsqld.au 07 3077 6854
Marketing Director	Dylan Shaw	marketing.bgs@scoutsqld.au
Finance Director	Jean Clifford	finance.bgs@scoutsqld.au
Heritage and Records Manager	David Rogers	heritage.bgs@scoutsqld.au
Cast Admin	Tania Dalton	cast.admin.bgs@scoutsqld.au
Car Parking	Kathy Ede	carparking.bgs@scoutsqld.au
Catering / Primrose	Deb Harvey	catering.bgs@scoutsqld.au
Hire	Alex Smerdon	hire.bgs@scoutsqld.au
Lighting	Alex Smerdon	lighting.bgs@scoutsqld.au
Make Up / Wigs	Jess Zyle	jessica.zyle@outlook.com
Sound	Tyson Hese	sound.bgs@scoutsqld.au
Video / SFX	Alan Burchill	video.bgs@scoutsqld.au
Musical Director	Scott Menzies	music.bgs@scoutsqld.au
Band	Christopher Roberts	orchestra.bgs@scoutsqld.au
Stage Manager / Set & Design	Ian Fredrick	backstage.bgs@scoutsqld.au
Small Props	Wendy Windley	gl@nurseryroad.scoutsqld.com.au
VIP	Jenny Danslow	vip.bgs@scoutsqld.au
Wardrobe	Pat Dale	pat.dale@hotmail.com
WH&S	Steve Fitzpatrick	whs.bgs@scoutsqld.au

# The Scarlet Scarf

The first Gang Show was produced by Ralph Reader in October 1932 at the Scala Theatre, London and was held to raise funds for a swimming pool. When Ralph Reader first started the Gang Show, he decided that the cast should be organised as a Scout Troop. This arrangement was so successful that it has been carried on ever since.

But the lads who were members of the Gang Show Troop wanted some kind of identification, and it was decided to adopt a distinctive scarf. It is not actually known who decided on the scarlet scarf, but it has since become traditional and internationally accepted as the symbol of Gang Shows.

As Gang Shows extended throughout the world, some further means of identification was needed to distinguish one show from another. London led the way again by embroidering in gold, on the point of the scarf, the insignia "G.S. London". Today, each Gang has its own local identifying badge in gold on the point of the scarf. Gang Show has become a tradition throughout the Scouting world and, as with all traditions; there are some rules to follow.

One of these is that a Show does not adopt a badge on its scarf until it has completed three annual performances and demonstrated that the Show is established as an ongoing activity, and not just a single event.

Our first Brisbane scarf was maroon cotton. This later changed to scarlet in the early sixties, and in 1970, the year that females entered our cast, we changed the badge to the design now used by shows throughout the world with the initials "G.S." and our name 'BRISBANE' in gold.

## Wearing The Brisbane Gang Show Red Scarf

The Gang Show Scarf is a much sought-after possession. Under NO circumstances is the scarf to be swapped, traded or sold. Make sure you put your name on yours.

New members of the Gang will receive their scarf at the Red Scarf Presentation evening. Gang Show Scarves must only be worn to rehearsals and performances, when participating in a Gang Show activity, or when attending other Scout Revue Shows.

Years of service scarves are awarded to those members of the Gang who have been actively involved in cast or support teams for ten, fifteen, twenty, twenty-five, thirty, thirty-five, and forty years. These scarves have a '10,15, 20, 25, 30, 35 or 40' embroidered on the peak of the scarf for the years of service – these are VERY special.

# Support Information

## Service Requirements

In order for a year of service to be acknowledged, the BGS member must have submitted their completed support application form before the cutoff date (10<sup>th</sup> May 2026) for inclusion in the program; and must have provided a minimum of 8 Shows or 25 hours service. Please be aware that applications will only remain open as long as positions are available.

## ID Cards

Your Brisbane Gang Show ID card will be issued to you by the Operations Director. It must be worn and clearly visible at all BGS activities to ensure safety, security and easy identification across the team. Only the current year's ID tag is to be worn, please remove other year name tags from your person.

Please keep your badge safe, if it is lost, a replacement can be issued at your own cost.

## BGS Events, Functions & Activities

Aside from our regular weekly rehearsals and the show itself, Brisbane Gang Show hosts several additional events throughout the season. These include fundraising events, such as BBQs, Trivia Night and Red Scarf.

Further details will be communicated throughout the season, and your support and involvement at these events is greatly appreciated. In 2026, the main events are outlined below.

### The BGS Gala

Saturday 30 May 2026 6:30pm – 10:30pm – Presidential Ballroom, Pullman Hotel, King George Square

Join us as we celebrate 75 incredible years of Brisbane Gang Show at our special 2026 Gala — an unforgettable evening of connection, celebration and entertainment.

Tickets available for purchase via the BGS website: \$195 per ticket.

Ticket Inclusions: 2½ course meal, 4-hour beverage package (soft drinks, beer & wine), 4 hours of live entertainment (band), Exclusive BGS 75th Anniversary gift (not available for sale) and Exclusive BGS show season ticket discount for all Gala ticket holders.

### Red Scarf

Sunday 21 June 2026 5:15pm for a 5:30pm start - Queensland Scout Centre

Join us to celebrate the tradition of the Red Scarf Presentation as we move from rehearsals to the theatre season. This is when we present the Brisbane Gang Show Red Scarf to first-time

recipients and long-service members who have demonstrated outstanding commitment to the Gang.

### Final Night Dinner

Saturday 11 July 2026 – At the Theatre – Specific Location & Time TBC (approx 4:30pm)

Between the Saturday matinee and our final night show, the whole Gang comes together for the Final Night Dinner. This is a special opportunity to celebrate the season, share a meal together, and enjoy our end-of-year presentations as we wrap up another fantastic BGS season.

The cost of the Final Night Dinner is included in your support fee for the season.

## Tickets

We encourage all support members to come along with friends and family to see the show you created.

**Please liaise with your Section Head to help spread attendance** across different show days and nights, ensuring your team still has appropriate volunteer coverage to successfully run the show.

Tickets can be purchased via the BGS website. If you have any questions about tickets, or would like to arrange a group booking, please contact our ticketing team on 07 3077 6854.

# At The Theatre

## 2026 Theatre

This year the Brisbane Gang Show will be performed at Wavel State High Performing Arts Centre.

- Cast and Support will enter via Chesterfield Street for the Stage Door Entry
- Audience Members will enter via Childers Street.

## Access Times

Access times to the grounds and theatre will be communicated closer to the theatre season via email.

As BGS externally hires our theatre, there may be specific venue access times. Generally, access is available 90mins prior to, and 30 mins following, each show. Please be respectful of these times, as failure to adhere to these contracted times can result in additional charges that BGS has not budgeted for. If you require additional time in the theatre, please liaise with the Producer via your Section Head.

## Sign In & Out

All members of the Gang must enter the theatre each night via the Stage Door, not through any other entrance. This way we can verify that you are here and have reported for the show. It also allows us to record who is here in case of any type of emergency s please make sure you enter and exit through the Stage Door each show.

## Parking

Parking restrictions for cast and support teams at the theatre will be in place to ensure there is parking available for external patrons attending the shows. Parking details will be communicated closer to the theatre season.

If you require parking for disability / other access needs, please contact the Producer ASAP.

## Backstage

This section of the Gang includes all the technical areas, and support functions that work with the cast to put on the show each night. They include - Backstage Crew, Lighting, Sound, Small Props, Make Up, Wardrobe, Wigs, Video, Band.

It is important that you remain within your section during the show - trying to stand side stage and watch the show is not allowed and is dangerous as scenery and sets are moving all the time.

All Gang members are invited side stage in the finale, subject to the discretion of the Director.

## Front Of House (Foyer)

This section (Ticket & Program, Canteen & Merch, VIP's, Ushers) has the responsibility for meeting and greeting our audience each night. Apart from the above Foyer teams, no member of the Gang should be in the Front of House area 45 minutes prior to the commencement of the show or at interval except as specifically required by the Producer or unless you are seeing a performance.

## Primrose (Catering/Snacks)

This section of the Gang provides catering for all Gang members. They can provide meals, snacks, drinks, tea and coffee - all for a small charge. Booking for meals - Primrose provide the opportunity for you to book meals in advance (if you are coming straight from work etc.)

## Smoking

Smoking and vaping are strictly prohibited at the theatre, school grounds and within 10 metres of their boundaries, including carparks and pedestrian access points.

## Emergency, WHS & Authority Levels

Emergency and evacuation procedures will be communicated prior to access to the theatre, and a drill will be conducted to ensure everyone is familiar with the process.

Once we are in the Theatre, the Producer and WH&S Manager is ultimately responsible for the safety of the Gang members and our audience. Having said that we are all responsible for our own actions, and should you be aware of any potential hazard or risk please report these as a matter of urgency to your Section Head.

The section head will then evaluate the issue for resolution or actioning as deemed appropriate.

If you are unable to safely and independently evacuate the theatre during the drill process, your suitability to be able to remain a member of the support team at the theatre will be reviewed.

Ultimately the Producer has the decision-making responsibility on behalf of the Gang, in their absence this responsibility would fall to the Director/Assistant Chief Commissioner – Major Events as appropriate.

Please remember your Section Head is there to help you, so if you have any problems/questions please discuss the matter with them.

# BGS Policies & Support

## Incident And Dispute Management Process

Brisbane Gang Show promotes a healthy and safe working environment for everyone. Everybody is welcome to be a part of the teams that support the show by being in a role that they feel best suited for. However, the Show does reserve the right to recommend alternate roles or to decline an application if it is felt to be in the best interest of a section or the show.

Everybody associated with the show should feel safe, included and listened to without being criticized. To this end, BGS does not condone bullying or physical, verbal or emotional abuse.

BGS operates with a hierarchical leadership structure, from the Producer / Director, and then the Section Heads. We actively encourage members of all support teams to contribute and put forth their ideas for items but with the understanding that the final decision will most likely be made higher in the hierarchical chart. Once that decision is made, the expectation is that all team members will understand the reasons behind the decision and will progress in continuing to work towards our common goal in an inclusive and supportive way.

It goes without saying that during the excitement and exhaustion of a live show season, from time-to-time things can happen or be said that may cause some friction. If this does happen, it is important for the issue to be dealt with quickly so that resolutions can be sought before an issue festers, becoming a bigger issue and upsetting the harmony within a team or the show.

To achieve this BGS has adopted the following process to deal with incidents or disputes that should arise: (Note that, unless otherwise required, all issues raised will be treated as confidential)

1. Issue to be raised and discussed initially with the Section Head. They will either manage the issue or refer on to the next step, depending on the nature of the issue and/or the parties involved.
2. Issues that cannot be managed by a Section Head or that involve a Section Head, are to be brought to the attention of the Operations Director, Producer or Director.
3. Once an issue is brought to Operations, it will be documented to ensure all details are clear. This information will require specific information on: Names, Dates and Specific Details of the Issue. If required, Operations will speak to any other witnesses or other parties involved.
4. Any production related issue of a serious nature will be brought immediately to the attention of the Director. This may occur even before talking to anyone else.
5. Once the issue is documented, Operations will then refer the document to the Executive for any additional follow up needed. Where the document is referred, it will be based on relevancy, and the further action needed.
6. If any further follow up is required this will be done within the following 2 weeks. Regular, suitable and appropriate feedback will be made to the original party on progress and outcomes. In all cases, issues will be managing within the Scouting 2-up process and an agreed independent 3rd party to observe as appointed by

the Producer or Director. This helps ensure that things stay civil and that there is balance and that the issue is dealt with fairly.

It is most important to remember that any incident or issue to be raised must be done so within a reasonable time frame, but certainly within 12 months of the incident occurring. For further information in this regard, please refer to the relevant sections of Queensland Branch Scouting Instructions (QBSI).

## Other BGS Policies

Brisbane Gang Show has several formalised policies. If you need a copy of any of these documents, please email the executive secretary - [secretary.bgs@scoutsqld.au](mailto:secretary.bgs@scoutsqld.au)

## Child Safety

Scouts Queensland is a Child Safe organisation with zero-tolerance for any harm, abuse or neglect of children. We value the diversity of our members, including gender, sexuality, race, religion and ability. Visit our [Child Safety page](#) for more information.

Brisbane Gang Show has a number of youth members in cast and volunteer roles (such as Front of House) who are under the age of 18 years. As such, BGS has a number of specially trained Child Safe Scouting Officers (CSSO) appointed for the duration of the season.

The Current Child Safe Scouting Officers contact details will be on display at camp, QSC and at the theatre.

If an incident arises that you feel needs attention, please feel free to contact the events CSSO directly, or you may make contact with the Operations Director.

### Your 2026 Brisbane Gang Show Child Safe Officers

- Shaun Sandilands (Producer)
- Jo Neeland (Production)
- Libby Hotham (Operations)
- Jean Clifford (Finance)
- Darryl Clare (First Aid)

## BGS Diary

### 2026 - 75th Theatre Season Diary

Month	Date	Day	Time	Activity	Location
June	21 <sup>st</sup>	Sunday	10.30 - 6.30pm	Lump Rehearsal & Red Scarf Ceremony (5:30pm)	QSC
	26 <sup>th</sup>	Friday	6.00pm - late	Commence Bump in (No Cast)	Theatre
	27 <sup>th</sup>	Saturday	9.00am – 6.00pm	Bump in Cont.	Theatre
			7.30pm	Lighting Plotting (No Cast)	Theatre
	28 <sup>th</sup>	Sunday	8.30am - 11.30am	Sets Rehearsal (No Cast)	Theatre
			12.30 - 5.00pm	Cast & Sets Rehearsal	Theatre
			6.00pm	Lighting Plotting (No Cast)	Theatre
	29 <sup>th</sup>	Monday	6.30 - 10.30pm	Tech Rehearsal (No Cast)	Theatre
	30 <sup>th</sup>	Tuesday	6.30 - 9.30pm	Tech Rehearsal – with Cast – no Costumes	Theatre
July	1 <sup>st</sup>	Wed	6.30pm	Dress Rehearsal	Theatre
	2 <sup>nd</sup>	Thursday	6.30pm	Dress Rehearsal	Theatre
	3 <sup>rd</sup>	Friday	6.00pm	Opening Night (7.30pm Curtin)	Theatre
	4 <sup>th</sup>	Saturday	9.30am	Matinee – Leap (10.30am Curtin)	Theatre
			2.00pm	Matinee – Leap (2.00pm Curtin)	Theatre
	5 <sup>th</sup>	Sunday	10.00am	Matinee (11.00am Curtin)	Theatre
			2.00pm	Matinee (2.00pm Curtin)	Theatre
	7 <sup>th</sup>	Tuesday	6.30pm	Show (7:30pm Curtin)	Theatre
	9 <sup>th</sup>	Thursday	6.30pm	Show (7:30pm Curtin)	Theatre
	10 <sup>th</sup>	Friday	6.30pm	Show (7:30pm Curtin)	Theatre
	11 <sup>th</sup>	Saturday	12:00pm	Matinee (1.00pm Curtin)	Theatre
			7.30pm	Final Night Show (7:30pm Curtin)	Theatre
	12 <sup>th</sup>	Sunday	12am - finish	Bump out	Theatre

Thank you for taking the time to read this booklet. Please keep it handy as it contains valuable information. We hope that your time with the 2026 Brisbane Gang Show is rewarding and full of fun and memories.

Have a wonderful season.